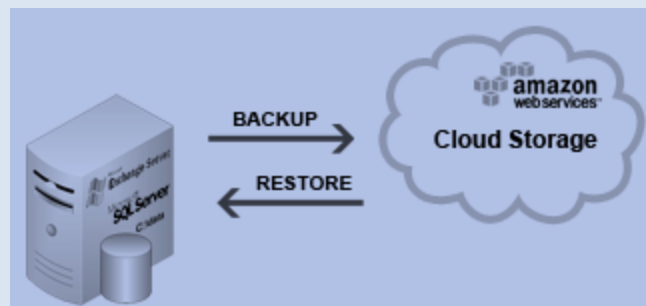


Zmanda Cloud Backup 4

Quick Start Guide

Zmanda Inc.



Contents

- Introduction2
- Installing ZCB2
- Backup Overview4
- Create a backup set.....4
- Configuring your backup set5
- Backup What6
- Backup Where6
- Backup How.....8
- Backup When9
- Save Configuration.....10
- Start Backing up!.....11
- Monitoring the Backup Runs12
- Learning More12

Introduction

Zmanda Cloud Backup is a secure and convenient way to back up Windows workstations and servers to Local Folder or Cloud storage ([Amazon S3](#)). With Zmanda Cloud Backup, you can select any of the following as backup type:

- Windows files and folders
- Microsoft SQL Server 2000, 2005 and 2008
- Microsoft Exchange Server 2003, 2007 and 2010
- Microsoft Share Point Server 2007, 2010 and WSS 3.0
- Windows System State (registry, certificate server and active directory information)

Getting started with ZCB is easy and you can start backing up in less than 15 minutes. This guide introduces you to the main steps of configuring and running your first backup.

Installing ZCB

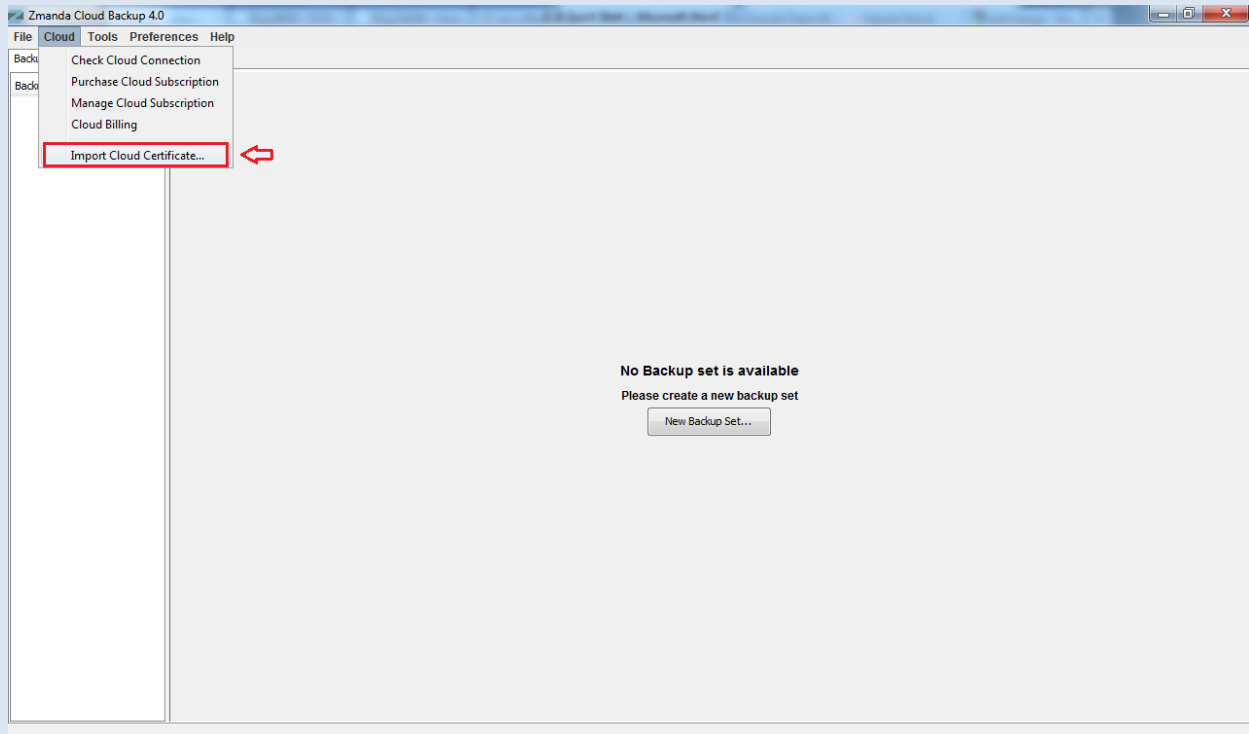
Before you begin:

- ☞ Make sure your machine has JRE 6 (Update 20 or higher) installed. You need to install the correct package for your machine platform (32 bit or 64 bit) from [here](#).
- ☞ Make sure your security/anti-virus program allows for installation of system services.

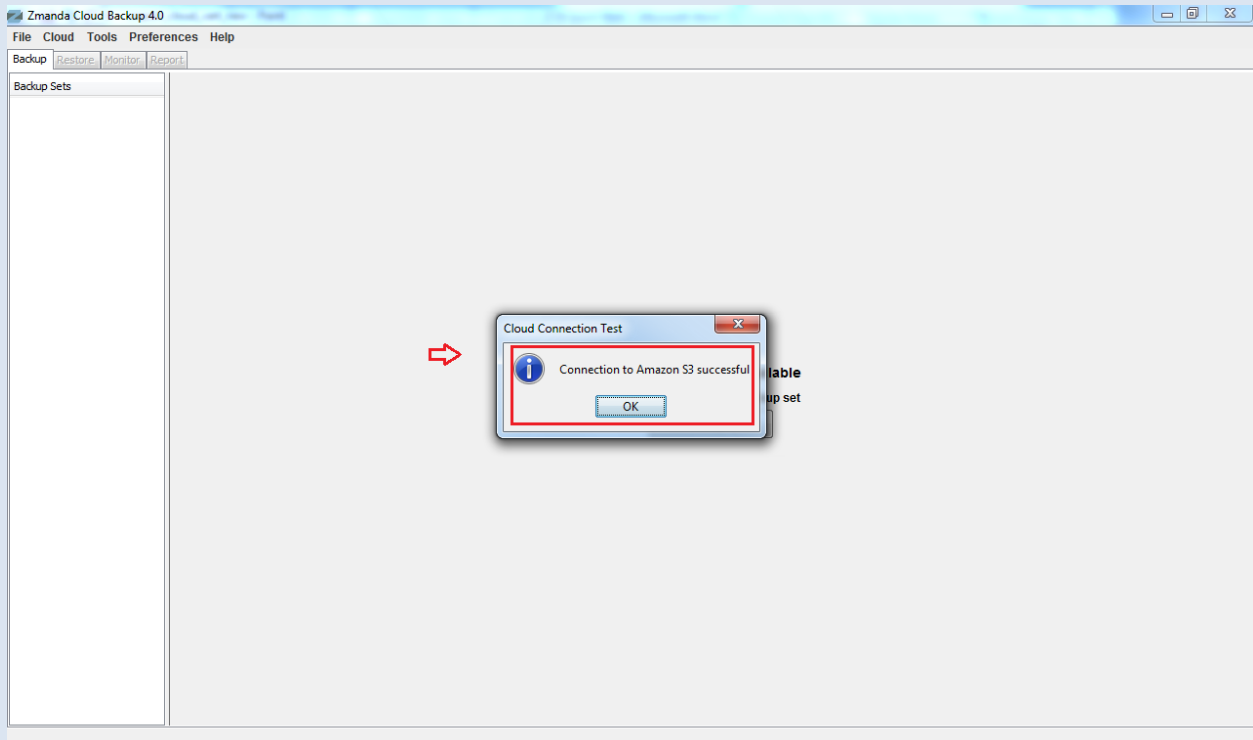
ZCB leverages the highly robust Amazon S3 infrastructure. The metering of customer usage and billing is performed by Amazon Web Services. Hence, to set up ZCB correctly with Amazon S3 cloud, one needs to perform the following steps:

- ☞ Complete the ZCB purchase from [Buy ZCB](#) link on Zmanda website. At the end of the process, you will be redirected to your network.zmanda.com account page.
- ☞ Download ZCB and your Zmanda S3 certificate named **s3.zmanda** from your network.zmanda.com account. This certificate is used by ZCB only to identify your Zmanda account to Amazon and can't be used for any other purpose such as encryption.
- ☞ Install ZCB. You will be asked to provide a password for a new Windows user named **amandabackup**. Please remember/document this password as you would need it to perform certain advanced operations.

- ☞ In the Windows Start Programs, locate **Zmanda Cloud Backup** program. If you are using Windows Vista/ Windows 7/Server 2008, right click on it and choose “Run as Administrator”.
- ☞ When ZCB starts up, you need to import the **s3.zmanda** certificate which you downloaded from the Zmanda Network as shown below.



To verify the steps completed till now, click **Cloud > Check Cloud Connection** in the ZCB user interface as shown above.



If you see the above message, congratulations - you now have ZCB up and running!

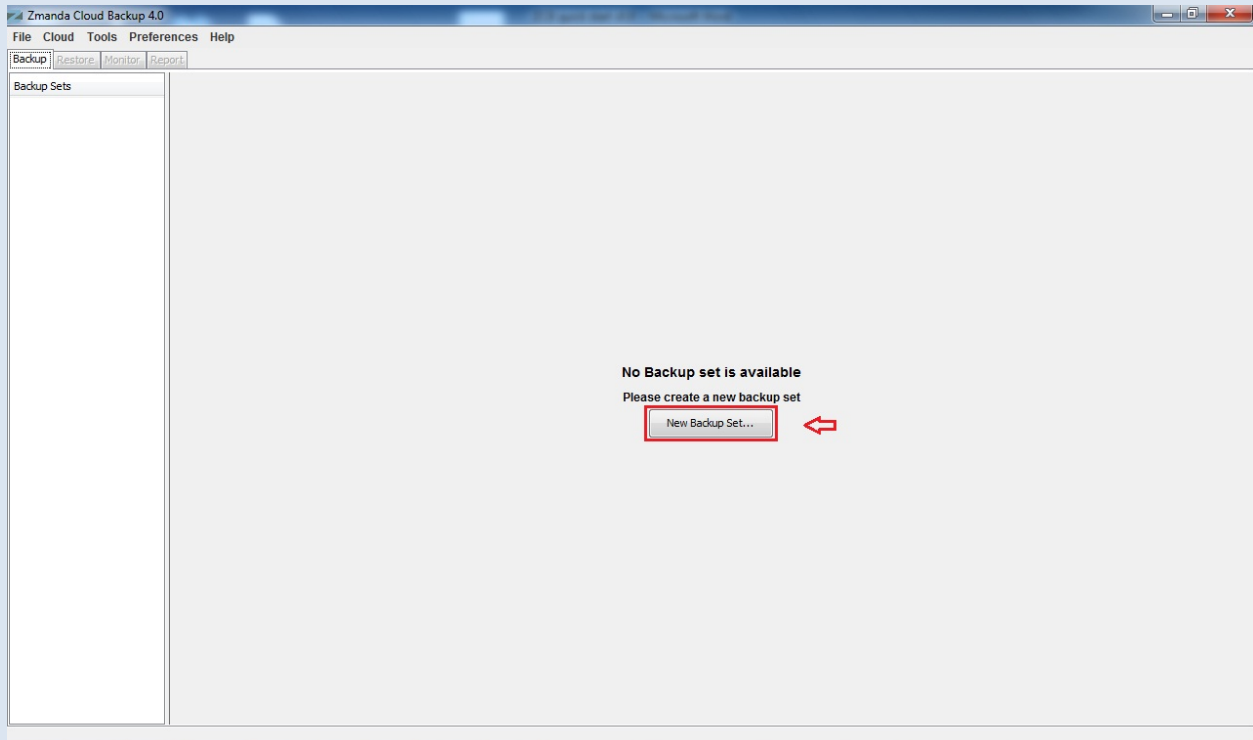
Backup Overview

Logically, the task of managing your backups involves answering four key questions:

- ☞ What you want to back up?
- ☞ Where you want to back up and for how long?
- ☞ How you want to back up?
- ☞ When you want to back up?

A ZCB backup set is nothing but your answers to the above four basic questions.

Create a backup set

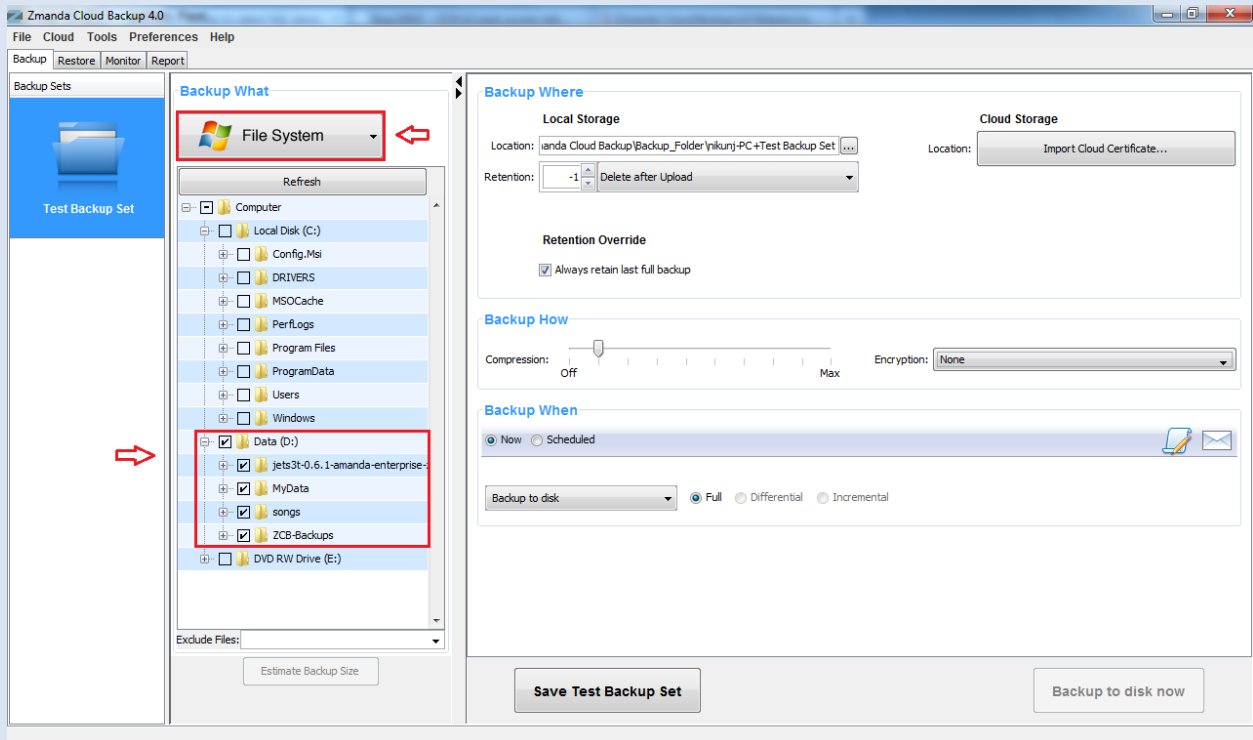


As shown above, upon first use ZCB offers you a choice to create a new backup set. Choose this option and create your first backup set. Please note that backup set names are limited to 32 characters and you cannot use Windows reserved characters such as `\|?_.<>*":+&`

Configuring your backup set

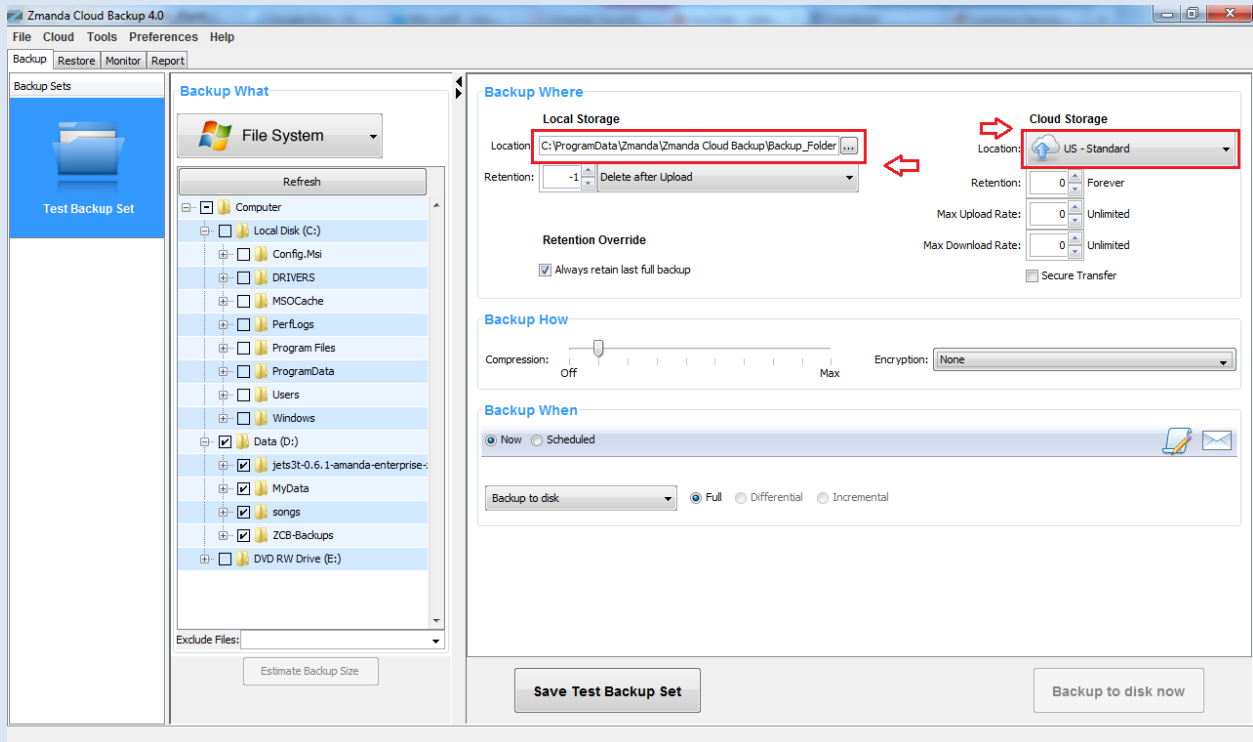
Just begin answering the 4 basic questions to configure your new backup set, as explained below:

Backup What



Choose what type of data you want to backup – **File System** or an application such as **Microsoft Exchange Server**. If you have chosen **File System**, select the folders/files which you wish to backup. For your convenience, ZCB automatically selects files/folders in your home directory. You can deselect the files which you don't wish to include in your backup set.

Backup Where

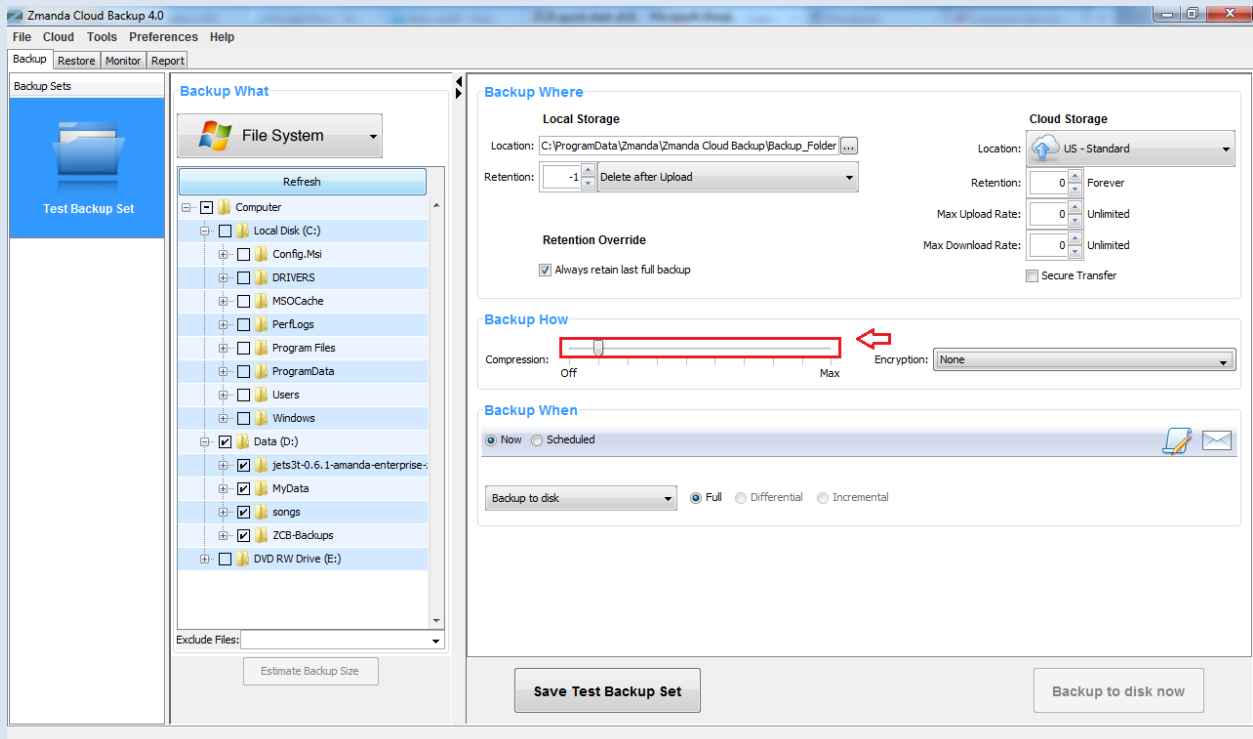


Choose where you wish to store your backup data. You have the following choices:

- ☞ **Only Cloud Storage:** Choose the desired Amazon data center from the dropdown under the **Cloud Storage** section.
- ☞ **Only Local Storage:** Choose the local disk location using browse button under the **Local Storage** section
- ☞ **Both Cloud and Local Storage:** Choose desired locations from both under the **Local Storage** section and the **Cloud Storage** section

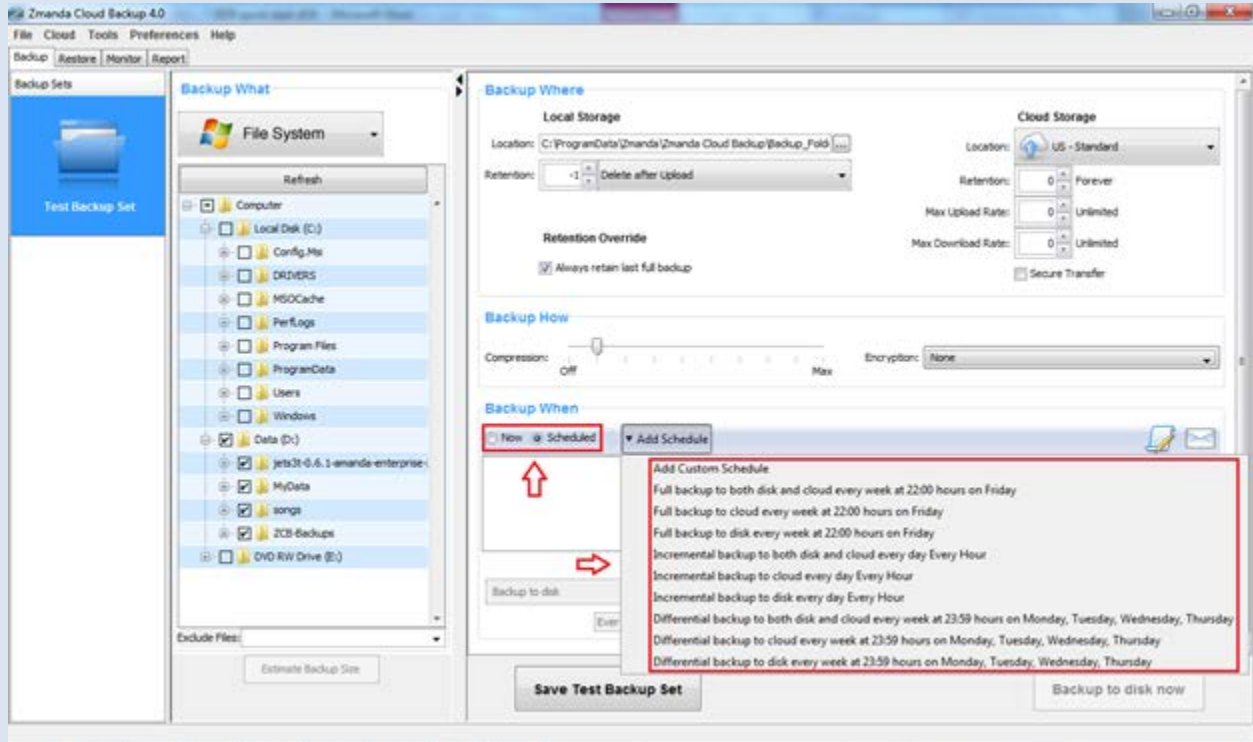
Click on **Secure Transfer** check box to make the data transfers to the cloud SSL-enabled.

Backup How



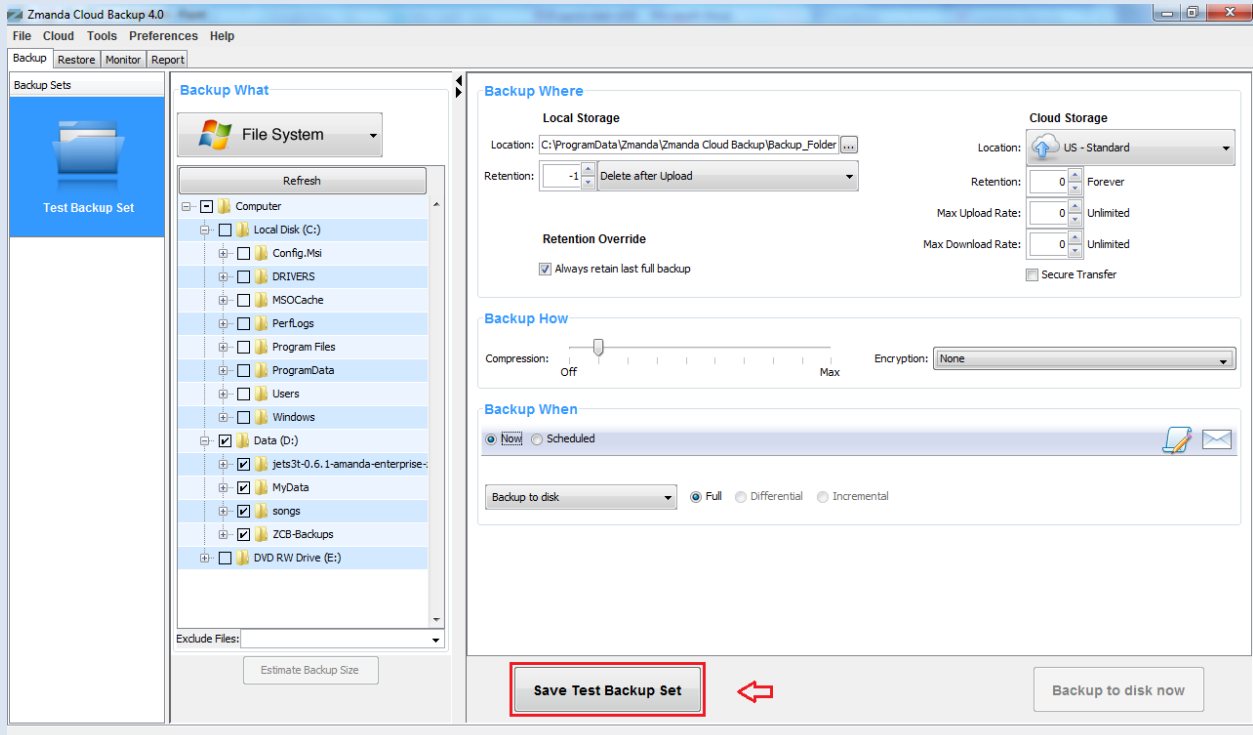
Choose desired compression setting to reduce the size of backup data ZCB stores and transfers to the cloud. Once you get to know ZCB better, you can also turn on backup data encryption so that your data is truly secure at all times. For details on how to enable encryption, please refer to the ZCB user guide.

Backup When



If you wish to do a manual backup, click on the **Now** radio button shown below. If, however, you wish to add a backup schedule, click on **Add Schedule** button to choose from easy to use schedule templates

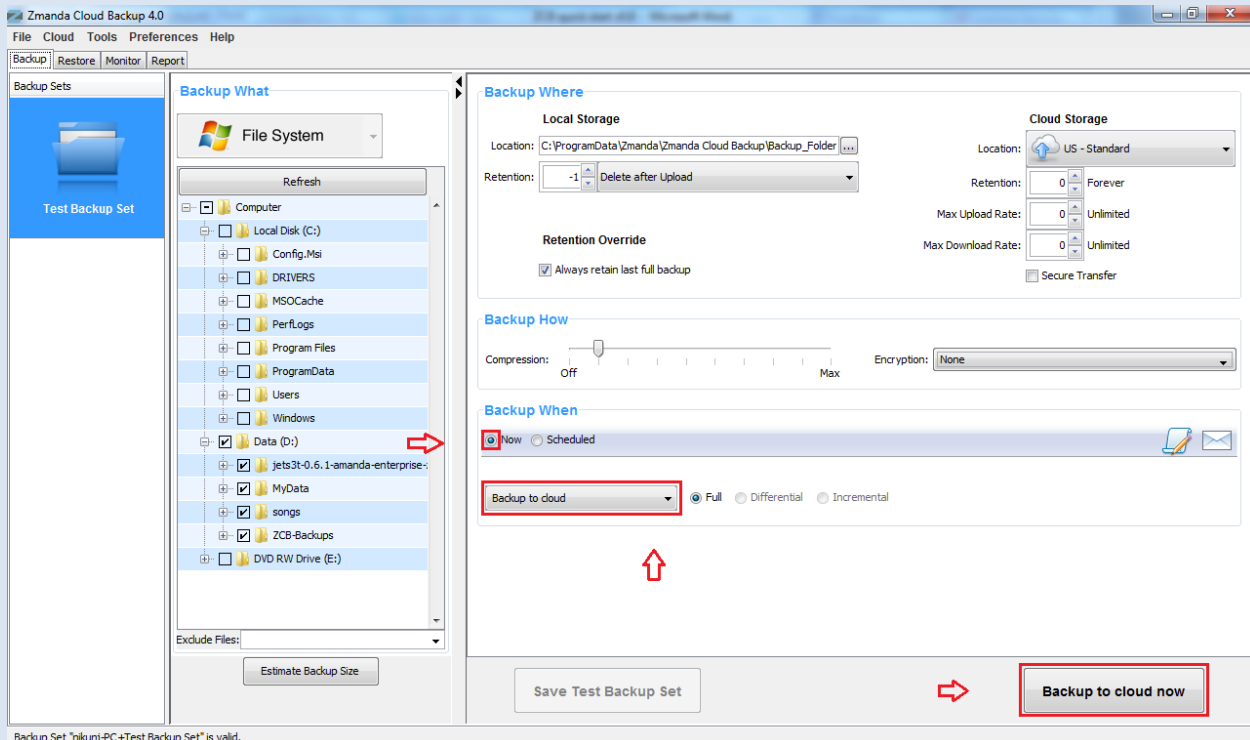
Save Configuration



Congratulations! Your first backup set is now configured.

Save the backup set configuration by pressing the “Save *backup-set-name*” button at the bottom of the page.

Start Backing up!

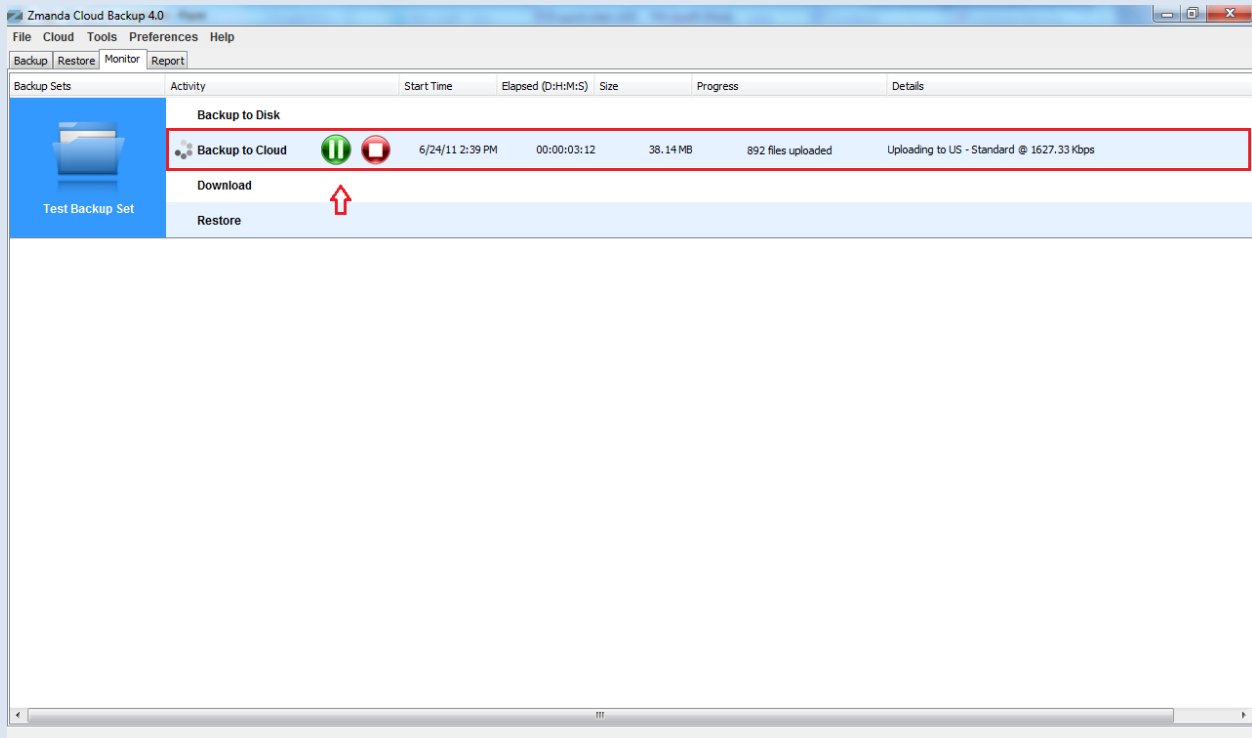


If you had added schedules for backups, the backups will start at the configured time and you can sit back!

If you had not added backup schedules and wish to instead run an instantaneous backup to cloud manually, you can do so. Click on the **Now** radio button in the **Backup When** section, choose the **Backup to Cloud** operation from the dropdown list and press the **Backup to cloud now** action button.

That's it! Your data will now start getting backed up and will soon be completely protected in the robust and reliable storage of Amazon S3!

Monitoring the Backup Runs



You can monitor the backup tasks being run by ZCB on the Monitor page. This page shows information about all the ongoing tasks for all the backup sets, giving you a consolidated view of what ZCB is doing at any moment.

Learning More

We understand that you will have more questions about the way ZCB works. We recommend that you check out [ZCB FAQs](#). For detailed instructions about particular features, you can refer to the [ZCB User guide](#).

You can also visit Zmanda forums - <http://forums.zmanda.com> and search the ZCB forums for questions already asked by our users and resolved by the community.

In case you need technical assistance, please open a support case by clicking on **Help > Contact Support** in the ZCB user interface.

