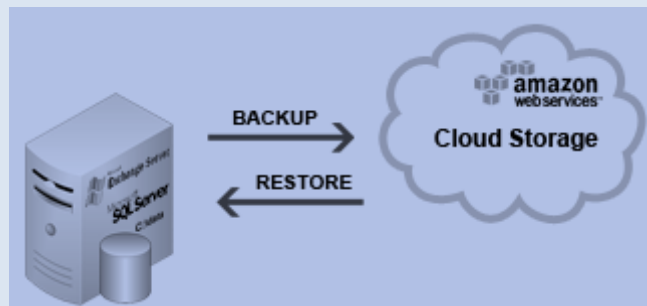


Zmanda Cloud Backup Quick Start Guide

Release 4.1

Zmanda, Inc



Contents

Introduction..... 2

Installing Zmanda Cloud Backup 2

Backup Overview 4

Create a backup set 5

Configuring your backup set 5

Backup What 6

Backup Where 6

Backup How..... 8

Backup When..... 9

Save Configuration..... 10

Start Backing up!..... 11

Monitoring the Backup Runs 11

Learning More 14

Introduction

ZCB is a secure and convenient way to back up Windows workstations and servers to Local Folder or Cloud storage ([Amazon S3](#)). With ZCB, you can select any of the following as backup type:

- Windows files and folders
- Microsoft SQL Server 2000, 2005 and 2008
- Microsoft Exchange Server 2003, 2007 and 2010
- Microsoft Share Point Server 2007, 2010 and WSS 3.0
- Windows System State (registry, certificate server and active directory information)

Getting started with ZCB is easy and you can start backing up in less than 15 minutes. This guide introduces you to the main steps of configuring and running your first backup.

Installing Zmanda Cloud Backup

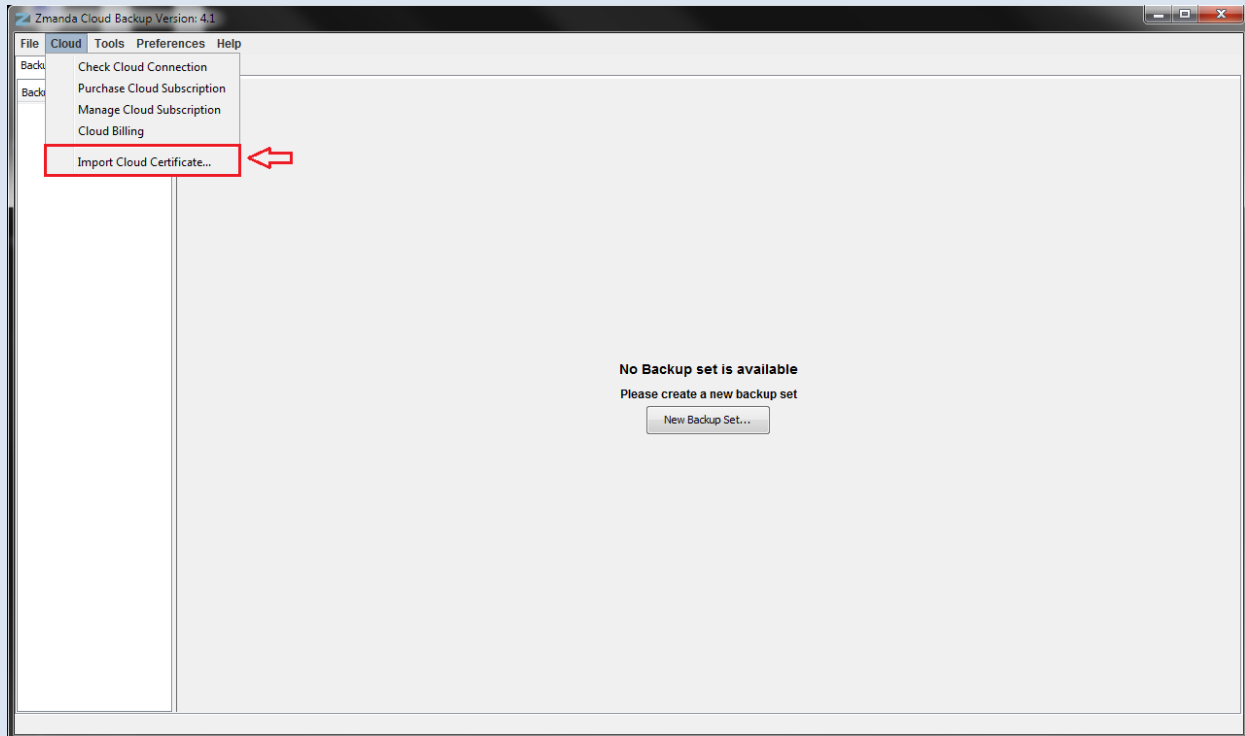
Before you begin:

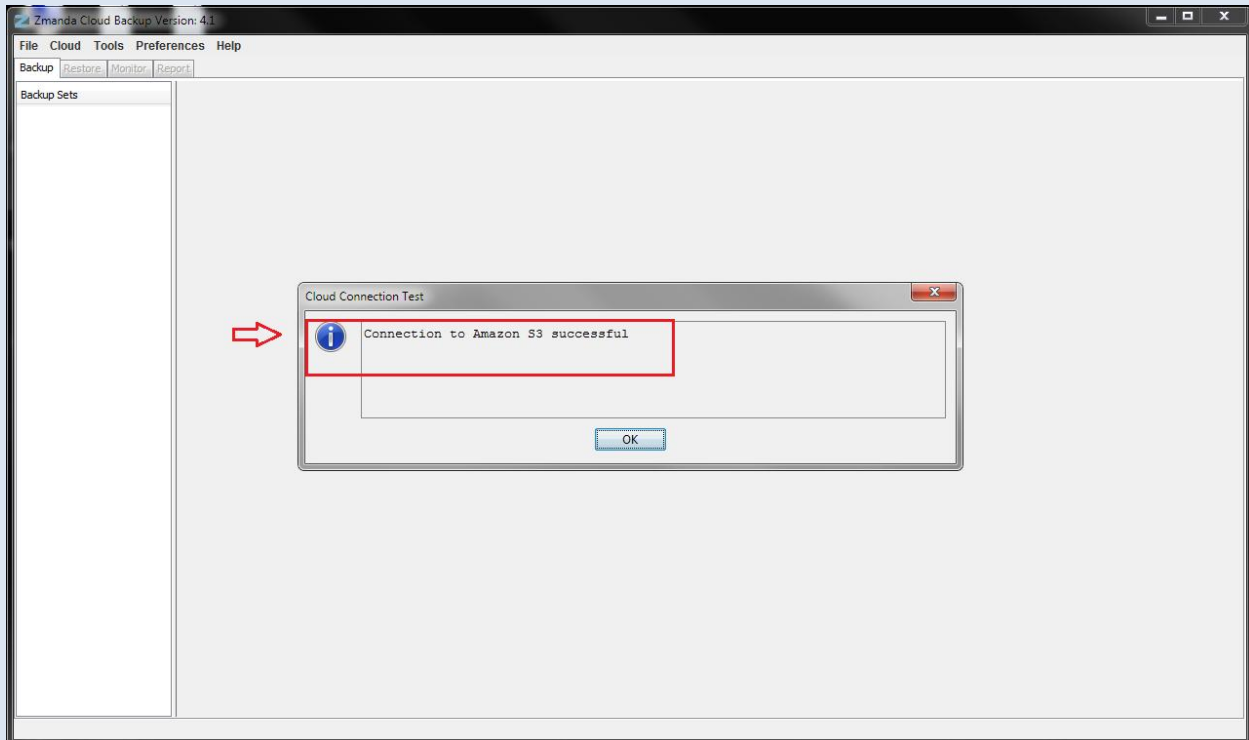
- ☞ Make sure your machine has JRE 6 (Update 20 or higher) installed. You need to install the correct package for your machine platform (32 bit or 64 bit) from [here](#).
- ☞ Make sure your security/anti-virus program allows for installation of system services.

ZCB leverages the highly robust Amazon S3 infrastructure. The metering of customer usage and billing is performed by Amazon Web Services. Hence, to set up ZCB correctly with Amazon S3 cloud, one needs to perform the following steps:

- ☞ Complete the ZCB purchase from Zmanda Website. At the end of the process, you will be redirected to your network.zmanda.com account page.
- ☞ Download ZCB and your Zmanda, Inc S3 certificate named **s3.zmanda** from your Zmanda Network. This certificate is used by ZCB only to identify your ZCB account to Amazon and can't be used for any other purpose, such as encryption.
- ☞ Install ZCB. You will be asked to provide a password for a new Windows user named **amandabackup**. Please remember/document this password as you would need it to perform certain advanced operations.
- ☞ In the Windows Start Programs, locate **ZCB** program. If you are using Windows Vista/Windows 7/Server 2008, right click on it and choose "Run as Administrator".

☞ When ZCB starts up, you need to import the **s3.zmanda** certificate which you downloaded from the Zmanda Network as shown below.





If you see the above message, congratulations - you now have ZCB up and running! If you see an error, double check the steps and contact support if the problem persists. You can click **Cloud > Check Cloud Connection** in the ZCB user interface at any other time to check connectivity to Amazon cloud.

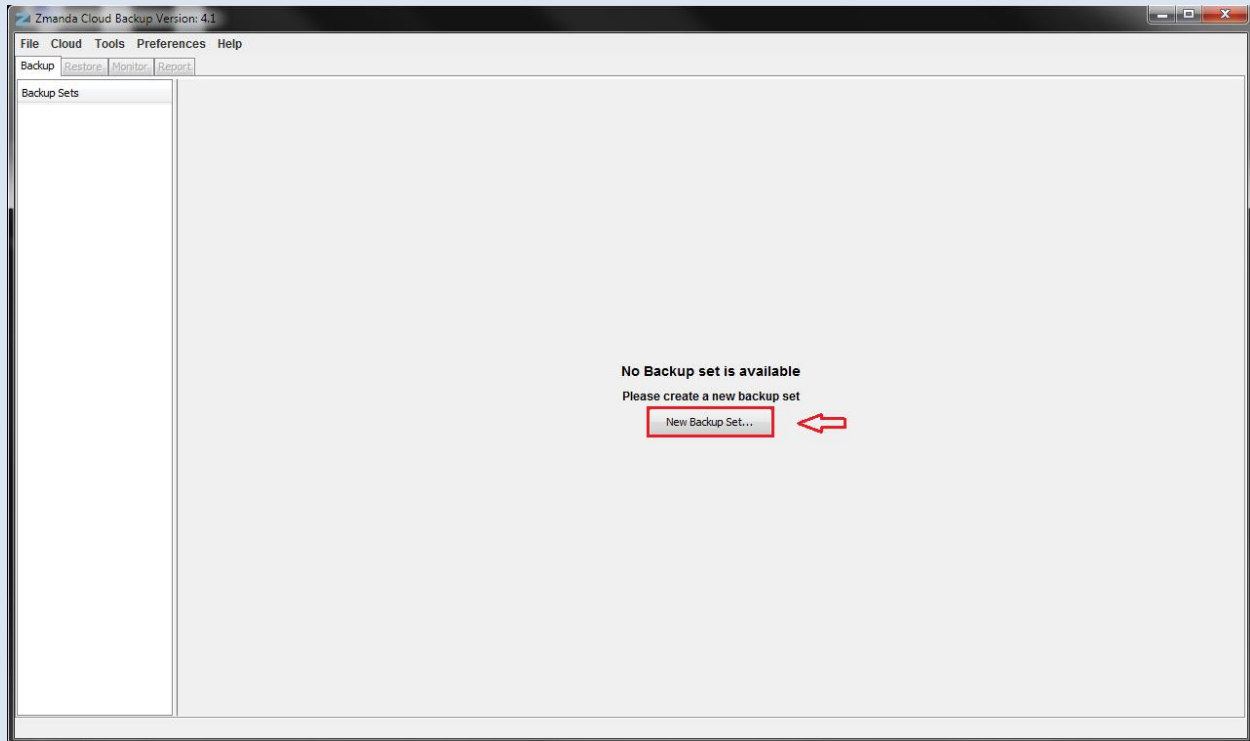
Backup Overview

Logically, the task of managing your backups involves answering four key questions:

- ☞ What you want to back up?
- ☞ Where you want to back up and for how long?
- ☞ How you want to back up?
- ☞ When you want to back up?

A ZCB backup is made up of your answers to the above four basic questions.

Create a backup set

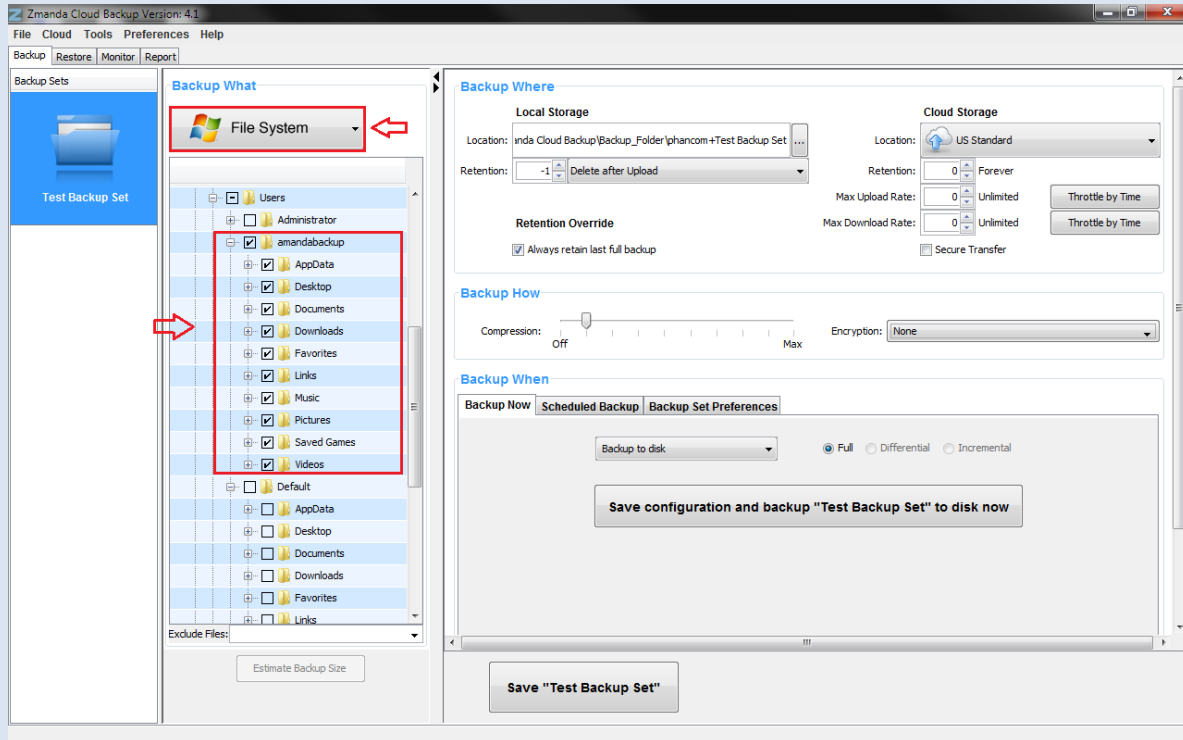


As shown above, upon first use ZCB offers you a choice to create a new backup set. Choose this option and create your first backup set. Please note that backup set names are limited to 32 characters and you cannot use Windows reserved characters such as `\/|?_.<>*":+&`

Configuring your backup set

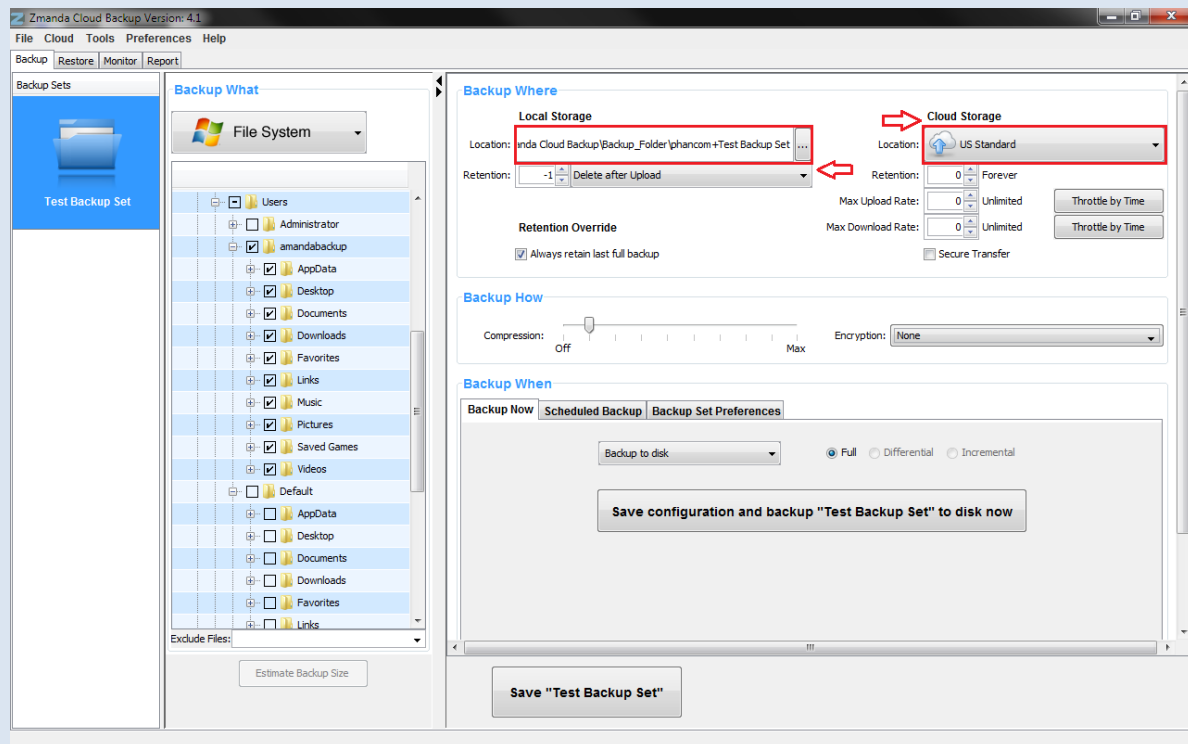
Just begin answering the 4 basic questions to configure your new backup set, as explained below:

Backup What



Choose what type of data you want to backup – **File System** or an application such as **Microsoft Exchange Server**. If you have chosen **File System**, select the folders/files which you wish to backup. For your convenience, ZCB automatically selects files/folders in your home directory. You can deselect the files which you don't wish to include in your backup set.

Backup Where

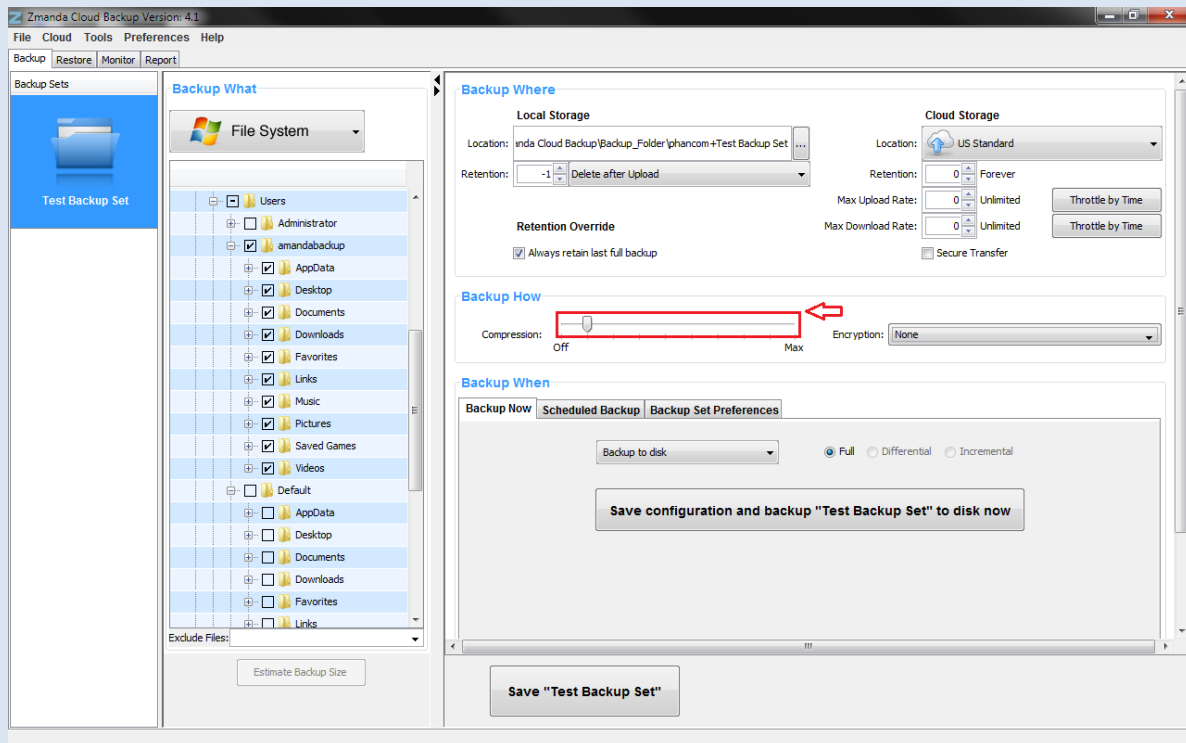


Choose where you wish to store your backup data. You have the following choices:

- ☞ **Only Cloud Storage:** Choose the desired Amazon data center from the dropdown under the **Cloud Storage** section.
- ☞ **Only Local Storage:** Choose the local disk location using browse button under the **Local Storage** section
- ☞ **Both Cloud and Local Storage:** Choose desired locations from both under the **Local Storage** section and the **Cloud Storage** section

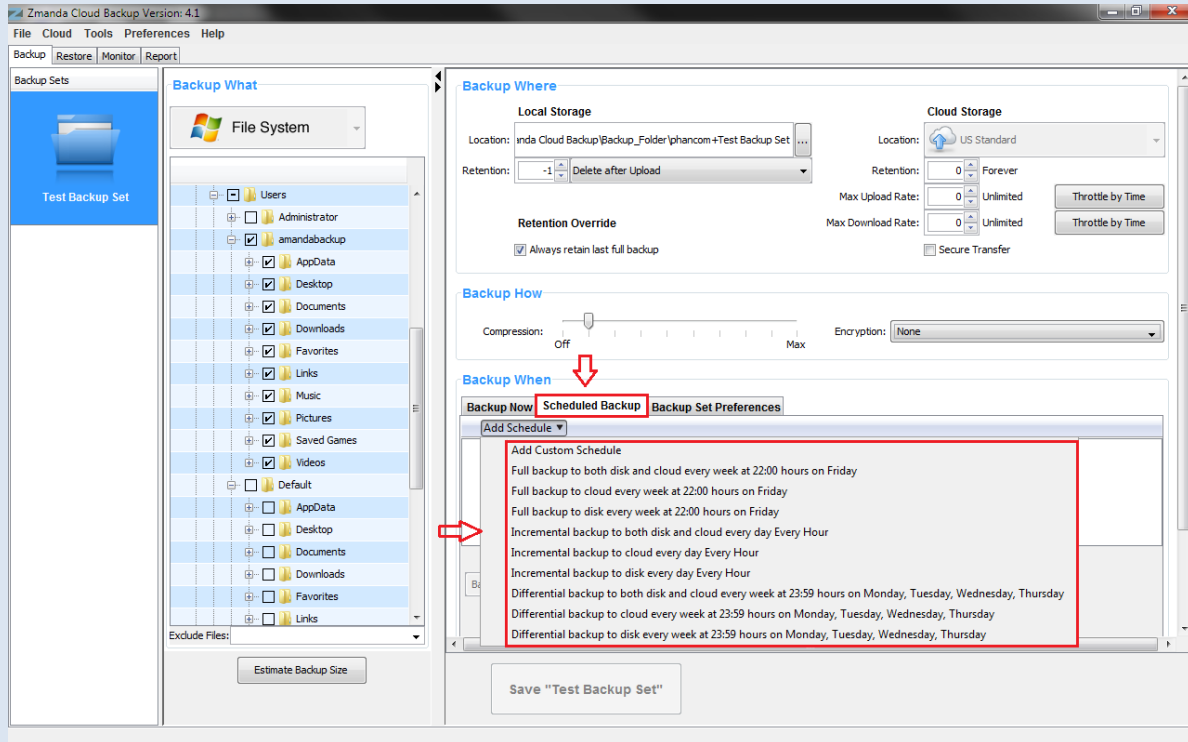
Click on **Secure Transfer** check box to make the data transfers to the cloud SSL-enabled.

Backup How



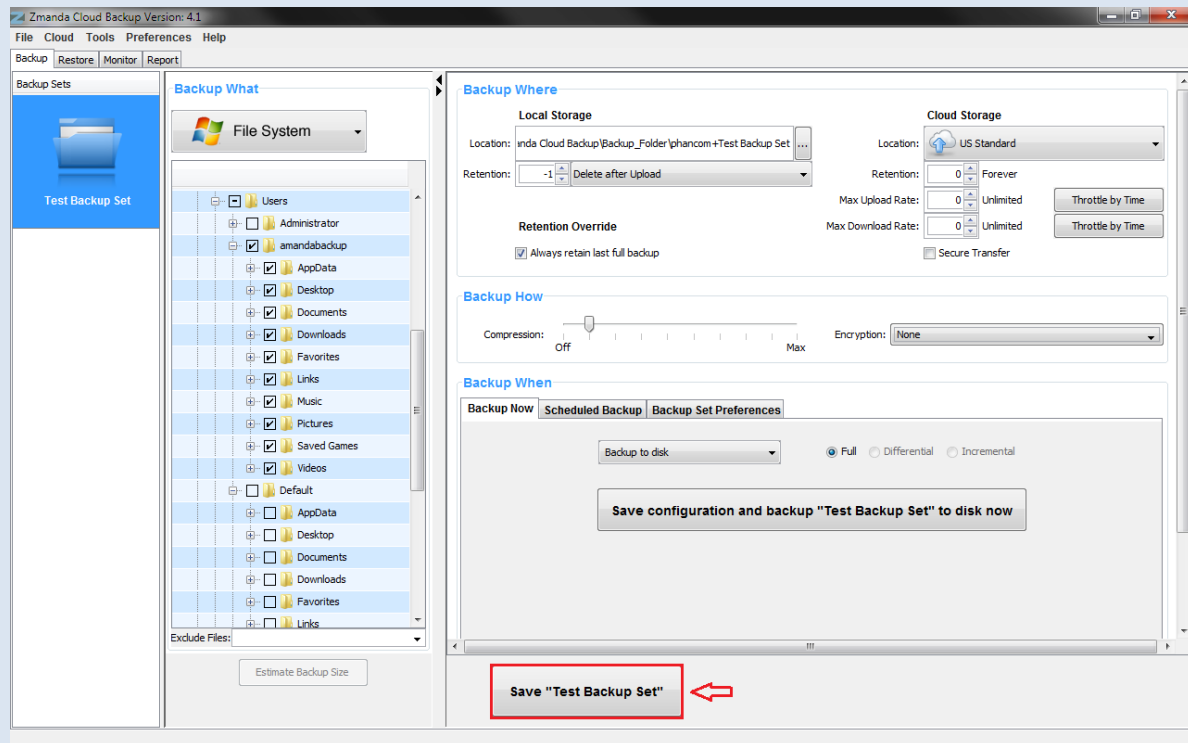
Choose desired compression setting to reduce the size of backup data ZCB stores and transfers to the cloud. Once you get to know ZCB better, you can also turn on backup data encryption so that your data is truly secure at all times. For details on how to enable encryption, please refer to the ZCB user guide.

Backup When



If you wish to do a manual backup, click on the **Backup Now** tab as shown below in the [Start Backing up!](#) section below. If, however, you wish to add a backup schedule, click on **Add Schedule** button to choose from easy to use schedule templates.

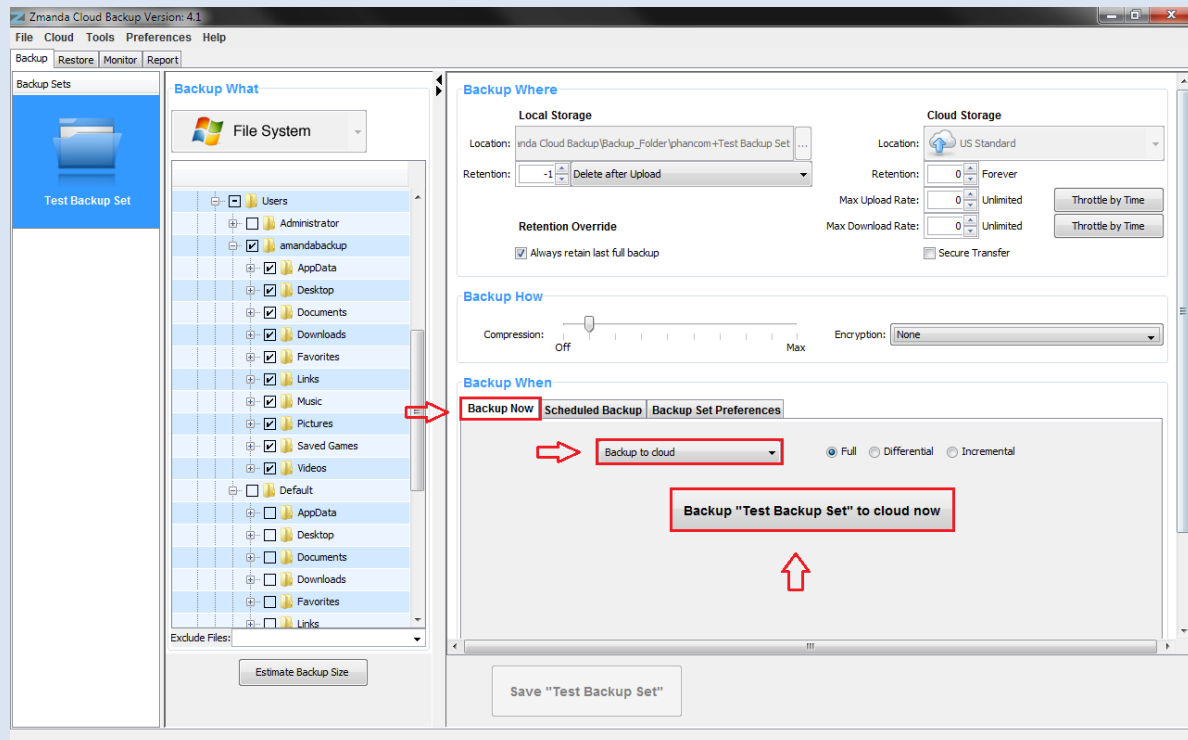
Save Configuration



Congratulations! Your first backup set is now configured.

Save the backup set configuration by clicking the **Save *backup-set-name*** button at the bottom of the page.

Start Backing up!



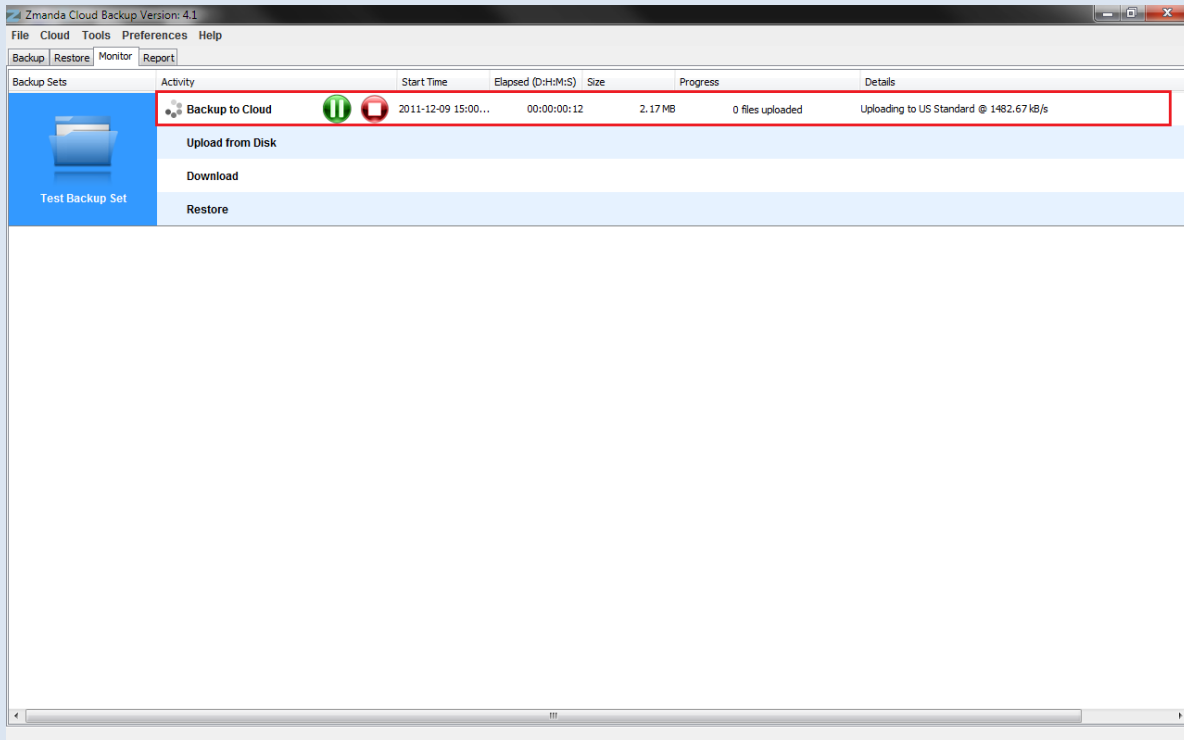
If you had added schedules for backups, the backups will start at the configured time and you can sit back!

If you had not added backup schedules and wish to instead run an immediate backup to cloud manually, you can do so. Choose the **Backup to Cloud** operation from the dropdown list in the **Backup When** section and press the **Backup to cloud now** action button.

That's it! Your data will now start getting backed up and will soon be completely protected in the robust and reliable storage of Amazon S3!

Monitoring the Backup Runs

Using ZCB User Interface



You can monitor the backup tasks being run by ZCB on the Monitor page. This page shows information about all the ongoing tasks for all the backup sets, giving you a consolidated view of what ZCB is doing at any moment.

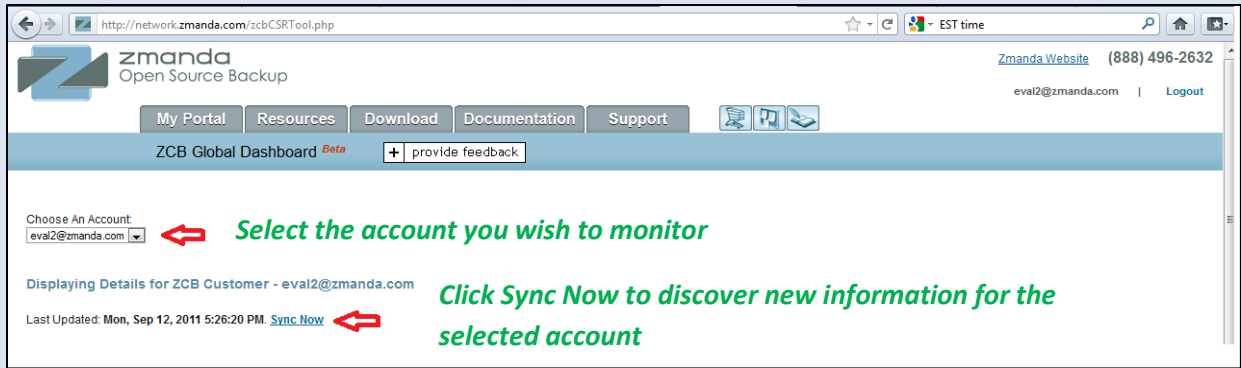
Using ZCB Global Dashboard

ZCB Global Dashboard is a new web interface which enables you to monitor backup activity across multiple ZCB machines and even multiple ZCB accounts. This application integrates with the Amazon S3 storage to provide you the monitoring information and hence can be used to verify backup data on the cloud.

Accessing the dashboard

Before beginning, please note that this application is under beta currently. However, we do encourage you to try it out and let us know your feedback. To access the dashboard, please follow these steps:

- Login to your www.network.zmanda.com account
- In a different browser tab: copy-paste this URL:
<http://network.zmanda.com/zcbCSRTool.php>



Once you are logged on, select the ZCB account you wish to monitor and click on **Sync Now** button shown above to make the dashboard discover the backup activity for the selected ZCB account.

Monitoring backup activity



You can view all the backup activity for the selected account and apply a filter on Amazon S3 regions.

System	Backup Set Name	Encryption	Backup Started (approx. local time)	Upload Finished (approx.) UTC	Backup Level	Size (in MB)	Upload Status
LAB-SERVER2008	Untitled	0	9/1/2011 06:00:59 AM	9/1/2011 1:02:16 PM	0	29.52	Successful
CK-LAPTOP	demo2	0	7/8/2011 12:26:50 AM	7/8/2011 07:27:53 AM	0	34.79	Successful
CK-LAPTOP	CompanyMeeting	0	7/8/2011 04:44:02 AM	7/8/2011 11:45:03 AM	0	34.80	Successful

As shown above, you can also view the backup runs by the machines being backed up or by the backup sets created on those machines.

Exporting Reports

OWNER-PC	Test1	0	10/4/2011 01:35:47 AM	10/4/2011 08:35:49 AM	3	0.86	Successful
OWNER-PC	テスト	0	9/24/2011 01:12:44 AM	9/28/2011 06:28:50 AM	0	29.47	Successful
OWNER-PC	テスト	0	9/24/2011 01:16:18 AM	9/24/2011 08:18:09 AM	0	29.47	Successful
OWNER-PC	テスト	0	9/27/2011 11:04:12 PM	9/28/2011 06:06:38 AM	0	60.38	Successful
OWNER-PC	テスト	0	9/27/2011 11:25:56 PM	9/28/2011 06:31:09 AM	0	60.38	Successful
OWNER-PC	テスト	0	9/28/2011 12:35:40 AM	9/28/2011 07:38:14 AM	0	60.38	Successful
OWNER-PC	テスト	0	9/28/2011 01:28:34 AM	9/28/2011 08:30:53 AM	0	60.38	Successful
Total:						2,773.17	

 [Export Report \(All Regions\) for this User to CSV](#) 

You can also export the backup activity reports to analyze them offline as shown above.

Learning More

We understand that you will have more questions about the way ZCB works. We recommend that you check out [ZCB FAQs](#). For detailed instructions about particular features, you can refer to the [ZCB User guide](#).

You can also visit the Zmanda forums - <http://forums.zmanda.com> and search the ZCB forums for questions already asked by our users and resolved by the community.

In case you need technical assistance, please open a support case by clicking on **Help > Contact Support** in the ZCB user interface. For any general query, you can write to us at zcb@zmanda.com.